



# Serial to 8 Channel WS2812 Driver

Thank you for your order!

For more info, please check out my website:

<https://www.bhencke.com/serial-ws2812-driver>

or

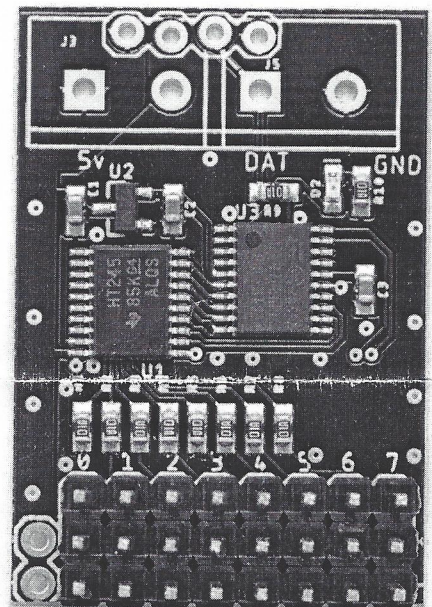
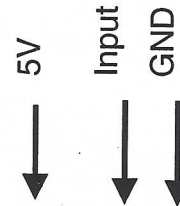
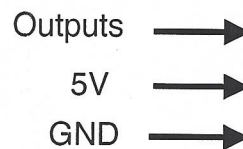
<https://goo.gl/JjEFD3>

There are 2 input connection options. The driver board has both a 0.1" and a 0.2" header with the same electrical connections. This allows standard 0.1" pin headers or 5mm screw terminals.

Both 5 V and GND are also available near the outputs and can be used to distribute up to 3 A to the outputs.

The outputs are driven at 5 V, and have 100 Ohm resistors for impedance matching with typical wiring and will help reduce high speed reflections on long cable distances. For best results, add a 100 Ohm resistor near the LED strip as well.

To use with Pixelblaze, change the LED type to "Pixelblaze O2 Output Expander" - then click on "Add Board" for each connected expander board. The interface will let you set up each channel's start index and pixel count. A count of zero effectively disables that channel.



More information about the serial protocol can be found via the above links.

Address	JP1 = 1	JP2 = 2	JP3 = 4
0			
1	x		
2		x	
3	x	x	
4			x
5	x		x
6		x	x
7	x	x	x

Each board can be set up with a unique address by cutting some of the jumpers on the back side of the board.

It defaults to address 0, and you can have up to 8 boards with addresses 0-7.

